

Condition Monitoring for Housing Freewheels

We present the exhibition model

„Housing Freewheels FH with a complete sensor system“

consisting of:

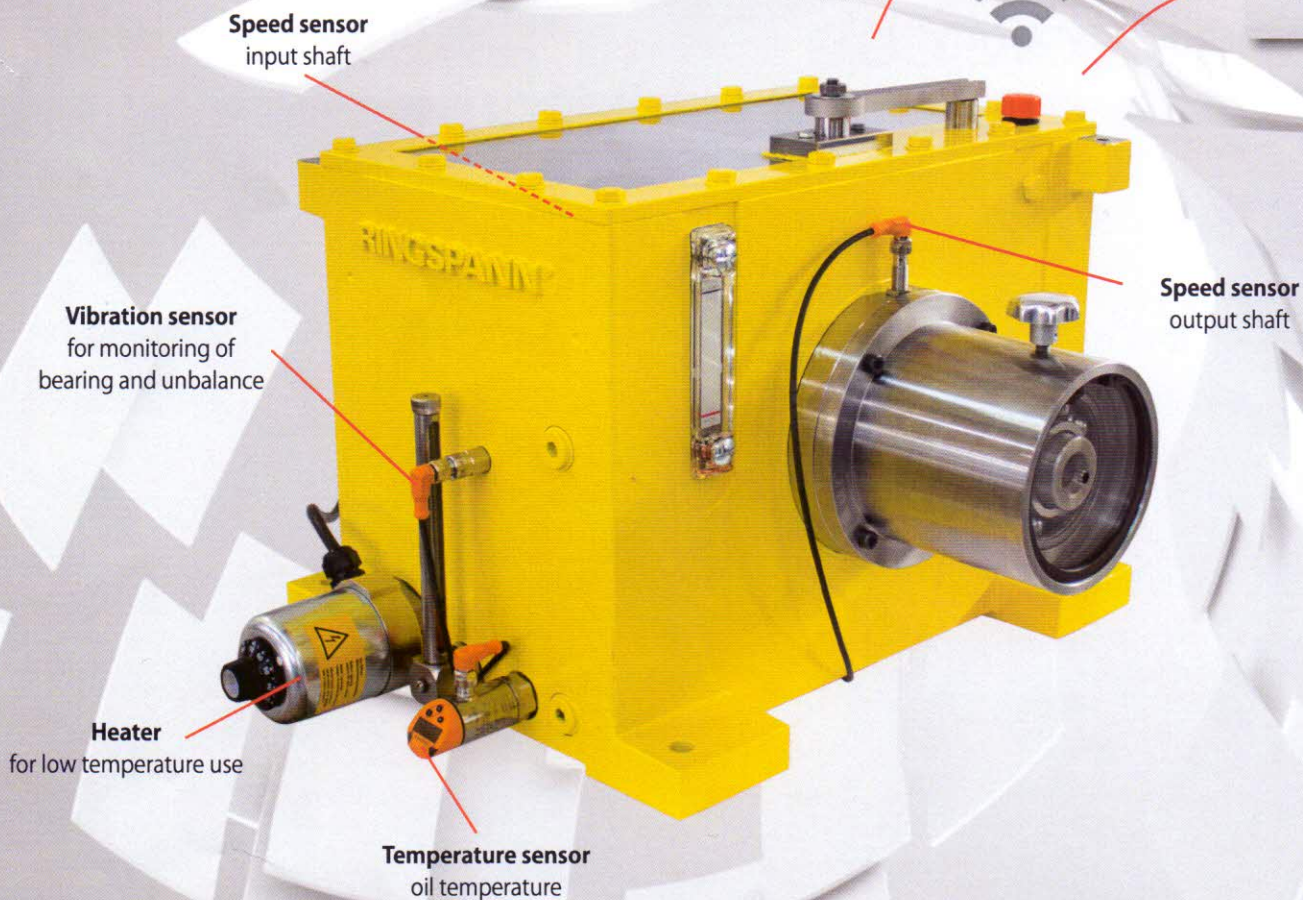
- vibration sensor,
- speed sensor input shaft,
- speed sensor output shaft,
- temperature sensor,
- diagnostic electronic and
- router.

The exhibition model can be driven with variable speeds, is equipped with an internal heater and a bearing damage can be simulated with a special device.

All sensor information will be transmitted by Wi-Fi to a tablet and demonstrate the full range of possibilities.

We will help you

All information can be send dire for analysis and remote mainte



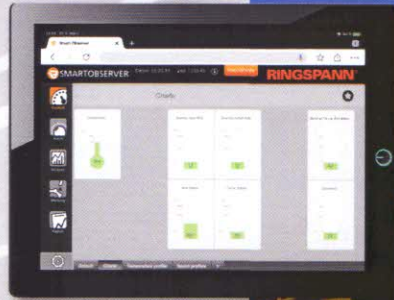
Housing Freewheels FH

Housing Freewheels FH are used as Overrunning Clutches at high speeds, which are the same or similar in freewheeling operation and in driving operation.

Housing Freewheels FH with hydrodynamic roller lift-off are typically used in cases where an assembly can be driven from two or more motors or turbines at the same or similar high speed. They allow a

continuous plant operation in the event that one of the energy sources or a drive line fails as well as energy saving in the case of partial load operation.

Housing Freewheels FH are completely enclosed freewheels for stationary arrangement with input and output shaft.



u
nd directly to RINGSPANN
aintenance.

Looking ahead

- Remaining time prognosis
- Ability to schedule maintenance
- Increased plant availability

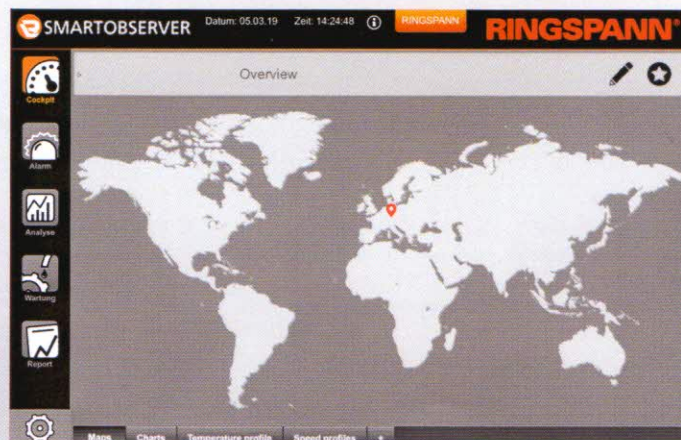
The moment decides

- Safe shutdown in case of acute damage or incidents
- Avoidance of consequential damages
- Reduce repair costs
- Verifiability of repairs
- Remote maintenance (via internet) by RINGSPANN engineers
- Process optimization

The view back

- Cause analysis and weak point analysis
- „Evidence“ for warranty

Easy determination of the place of use



... Prevention

... Reaction

... Analysis